

Reolink TrackMix WiFi

# Smart 4K Dual-Lens PTZ Camera with Auto-Zoom Tracking



## Auto-Zoom Tracking

Pan/tilt to track and zoom in on a moving target automatically.



## Dual View Display

See both a full view and a clear closeup on one screen.



## Dual-Band Wi-Fi

Never worry about network interference with 2.4 & 5GHz bands.



## 4K UHD

Delivers sharper images and videos with the finest details.



## Smart Detection

Distinguish people, vehicles, and animals from other objects.



## Two-Way Audio

Talk to anyone in front of the camera in real-time.



## Dual-Lens

Wide-angle & telephoto lenses for full-view and close-up images.



## Color Night Vision

Provides full-color nighttime recordings with its spotlights on.



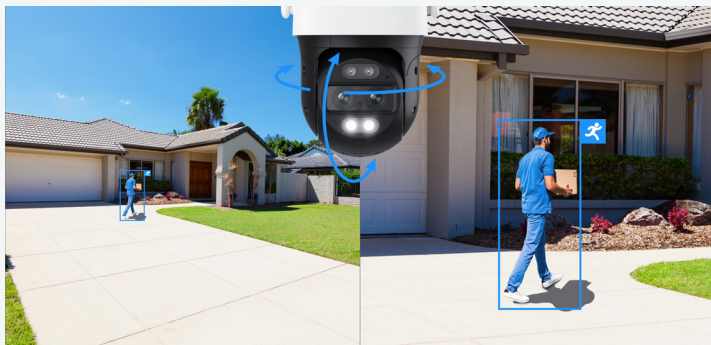
## Weatherproof

Performs well even in harsh weather conditions.



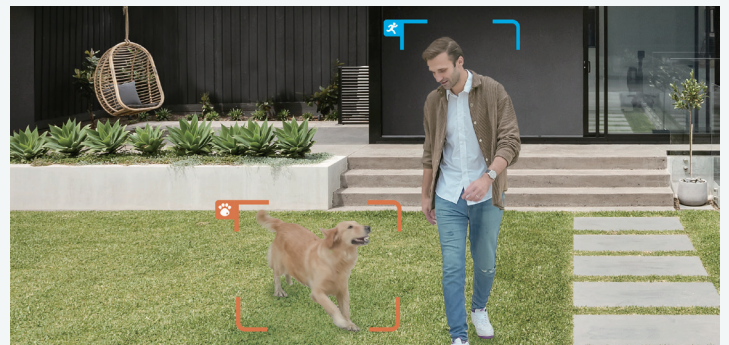
### Dual View on One Screen

The dual-lens camera brings you a broad overview and a clear closeup simultaneously and shows them on one screen.



### Tracking Made Smarter

Get razor-sharp, full-color recordings in 4K stunning clarity day or night. Never miss any important details.



### Only the Alerts You Want

Get alerts just for things you care about, like people, vehicles, and animals. No more useless notifications.



### Impressive Clarity in 4K 8MP

Get razor-sharp recordings in 4K clarity. Stay better informed with the hard-to-see details captured by the camera.



### Flexible Storage Options

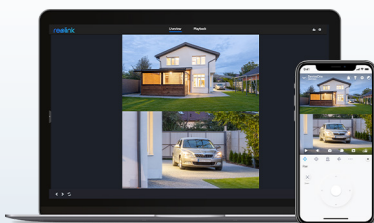
Save your recordings to a microSD card of up to 256 GB, Reolink NVR, or FTP server. Choose a way you like and enjoy customized security.

Gallery



**One App/Client for All Control**

Stay connected to your home or business anytime, anywhere.



**Privacy in Your Hands**

We made it a priority to ensure that your privacy is protected and your data is for your eyes only.



<b>Model</b>	Reolink TrackMix WiFi	
<b>Video &amp; Audio</b>	Image Sensor	1/3"+1/2.8"CMOS Sensor
	Video Resolution	Up to 3840 x 2160 (8.0 megapixels) at 25 frames/sec
	Lens	f=2.8mm@F=1.6,f=8mm@F=1.6
	Video Format	H.264,H.265
	Field of View	Horizontal: 104°-38° Vertical: 60°-21°
	Zoom Mode	6X hybrid zoom
	Day & Night	IR-cut filter with auto-switching
	Infrared Night Vision	Up to 30 meters (100ft) (LED: 2pcs/850nm)
	Color Night Vision	Spotlights: 2pcs/6500K/450 lumens
	Audio	Two-way audio
<b>Power</b>	DC Power	DC 12V=2A, <12W
<b>Interface</b>	Power System	DC power port Reset button
	Ethernet	One 10M/100Mbps; RJ45
	Storage	Micro SD card slot (Max. 256GB)
	Audio	Built-in microphone and speaker
<b>Pan&amp;Tilt</b>	Pan &Tilt Range	Pan: 355°, Tilt: 0°~90°
	Pan Speed	2.5°-90°/s (Speed can be set)
	Tilt Speed	1.5°-60°/s (Speed can be set)
	Preset	32
	Auto Tracking	Support
<b>Wi-Fi</b>	Wireless Standard	IEEE 802.11a/b/g/n
	Operating Frequency	2.4GHz/5GHz
	Wireless Security	WPA-PSK/WPA2-PSK
<b>Software Features</b>	Frame Rate	Mainstream: 2fps - 25fps Substream: 4fps - 20fps
	Code Rate	Mainstream: 4096Kbps -8192Kbps Substream: 128Kbps -1228Kbps
	Browser Supported	Edge, Chrome, Firefox, Safari
	OS Supported	PC: Windows, Mac OS; Smartphone: iOS, Android
	Smart Alarm	Motion detection; person detection; vehicle detection; pet detection
	Record Modes	Motion/scheduled recording (default: motion recording)
	Tracking Method	Digital Tracking; Pan/Tilt Tracking First; Digital Tracking First
	Protocols & Standards	HTTP, HTTPS, SSL, TCP/IP, UDP, UPNP, RTSP,RTMP, SMTP, NTP, DHCP, DNS, DDNS, P2P
	Maximal User Access	Supports up to 12 simultaneous video streams (10 substreams & 2 mainstreams); 20 users (1 admin account & 19 user accounts)
	Work with	Google Assistant
<b>Working Environment</b>	Temperature	Operating temperature: -10°C~+55°C (14°F~131°F)
	Humidity	Operating humidity: 10% ~ 90%
	Weatherproof	IP65
<b>Size &amp; Weight</b>	Dimension	228*147*129mm
	Weight	1.211kg
<b>Warranty</b>	Limited Warranty	2-year limited warranty. For support, visit <a href="https://support.reolink.com/hc/en-us/">https://support.reolink.com/hc/en-us/</a> .



- 1 Infrared LED
- 2 Lens
- 3 Mic
- 4 Daylight Sensor
- 5 Spotlight



- 1 microSD Card Slot
- 2 Reset Button

## Best Companion



microSD Card



RLA-POECSI  
(Combiner & Splitter)



PoE Injector

## Download Free Reolink App & Client

Learn more: <https://reolink.com/software-and-manual/>



## Terms and Privacy

Terms and Privacy: Use of the product is subject to your agreement to the Terms of Service and Privacy Policy at [reolink.com](https://reolink.com). Keep out of reach of children.

## Limited Warranty

Limited Warranty: This product comes with a 2-year limited warranty. Learn more: <https://reolink.com/warranty-and-return/>