

Reolink OMVI 3i PoE & 3i WiFi

Panoramic Vision Meets Intelligent PT Tracking



Reolink OMVI 3i PoE & 3i WiFi

Unmatched Clarity. Panoramic Awareness. AI-Powered Protection.

Experience next-level security with unmatched clarity, panoramic awareness, and AI-powered detection, delivering smarter monitoring and reliable protection for any outdoor space.

Combining a 10MP Dual-Lens Panoramic Cam with a 4K 8MP Pan & Tilt Cam, Reolink OMVI 3i cameras deliver both panoramic awareness and flexible detail capture. With 360° all-around coverage, Panoramic-to-PT synchronized tracking, and color night vision, Reolink OMVI 3i cameras keep wide areas and moving subjects clearly in view.

Designed for flexible deployment, Reolink OMVI 3i cameras support ceiling, wall, and corner mounting. Ideal for large yards, gardens, parking lots, long driveways, streets, warehouses, and commercial spaces, they provide wide coverage and intelligent monitoring, making them the ultimate choice for outdoor surveillance.



One Camera. Complete Coverage. Precise Details.

The upper panoramic camera and lower PT camera work together to maintain constant awareness across both wide scenes and close-up details. Even while the PT camera moves, the panoramic view remains visible, helping eliminate blind spots while capturing the full scene and important moments simultaneously.

Panoramic Cam for Large Areas

10MP Dual-Lens

180° Ultra-Wide View

Manual 0°–20° Tilt



Pan & Tilt Cam for Distant Details

4K 8MP Clarity

Motorized 350° Pan

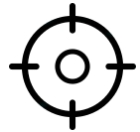
Motorized 50° Tilt

Always Tracks What Matters, Even When It Moves

The panoramic camera detects people, vehicles, and animals across the 180° view. Once detected, the PT camera automatically locks on and follows the subject, even beyond the panoramic frame. Auto Framing* keeps the target centered, while dual-view display shows both the full scene and tracked close-up simultaneously.



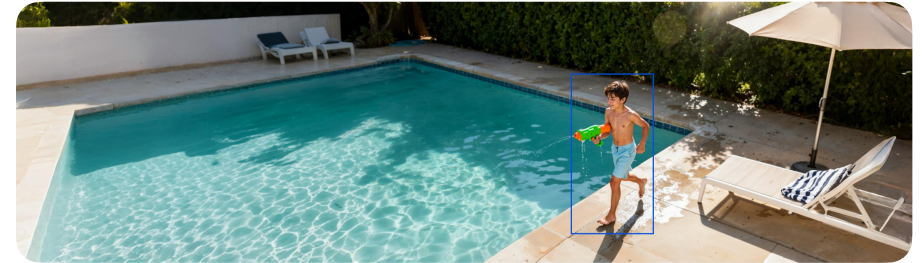
Panoramic-to-PT Sync



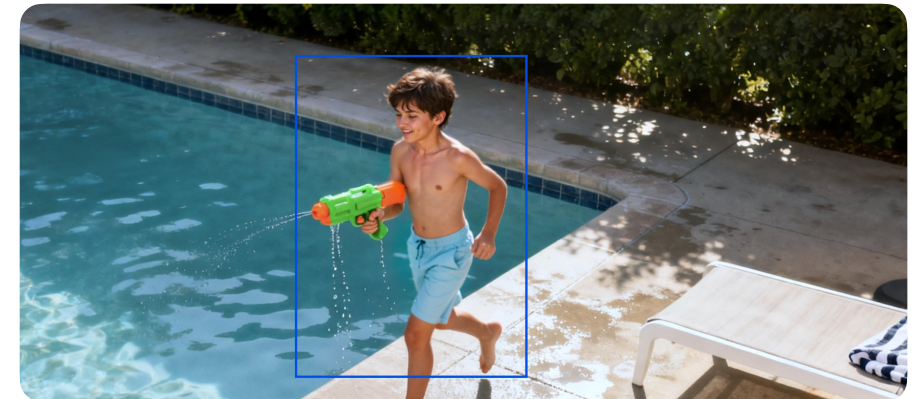
Lock-On and Tracking



Panoramic Cam Detects



PT Cam Follows & Auto Frames



Smart Control With Automated Coverage

Designed to reduce manual camera adjustments while maintaining full coverage—delivering easier monitoring and a better long-term user experience.

Pinpoint with One Tap

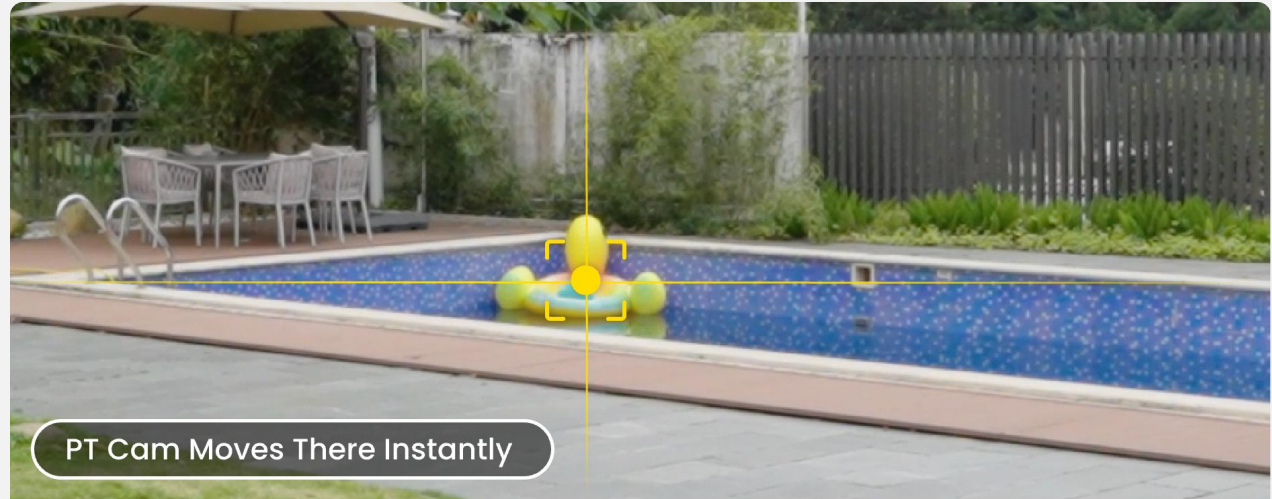
Tap anywhere within the panoramic view and the PT camera instantly moves to that location.

Preset Points & Automatic Patrol

Create up to 64 preset positions for instant quick access, and configure a patrol route by selecting up to 4 presets to automatically monitor key areas.

One-Click 360° Patrol

With a single tap, the camera automatically sweeps the surrounding area for complete coverage.



AI-Powered Detection for Smarter Security

Powered by advanced local AI, Reolink OMVI 3i cameras provide more reliable monitoring, faster alerts, and flexible protection tailored to real-world security needs.

Accurate AI-Powered Detection:

Advanced AI identifies people, vehicles, and animals, reducing false alerts caused by environmental motion such as wind, shadows, or lighting changes.

Customizable Perimeter Protection:

Create virtual fences, configure intrusion detection, set loitering alerts, and define detection zones for more precise monitoring. (Supported on the upper panoramic camera.)

Local AI Without Cloud Dependency:

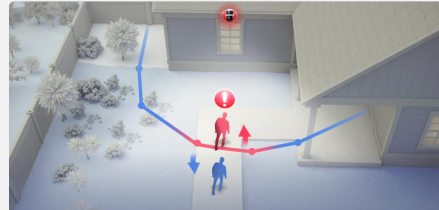
All AI processing runs directly on the device, ensuring detection and alerts continue even without internet connectivity or subscription services.

Flexible Alerts & Deterrence:

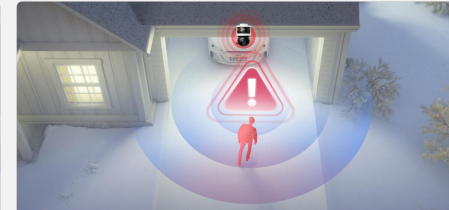
Customize notification types, schedules, privacy zones, and siren responses—giving you full control over how your security system reacts.



Smart Person/Vehicle/Animal Detection



Line Crossing Alert



Zone Intrusion Alert



Zone Loitering Alert

See Clearly at Night, In Color or Infrared

Intelligent night vision keeps your property visible after dark with both full-color and infrared options. Combined with optional lighting deterrence, Reolink OMVI 3i cameras enhance nighttime awareness and help protect your property around the clock.

Color and Infrared Night Vision:

Built-in white light enables color night vision for clearer details in low-light environments, while infrared mode supports discreet nighttime monitoring.

Smart Lighting for Security:

The white spotlight can be scheduled, manually activated, or triggered automatically when people, vehicles, or animals are detected.

Designed for Nighttime Protection:

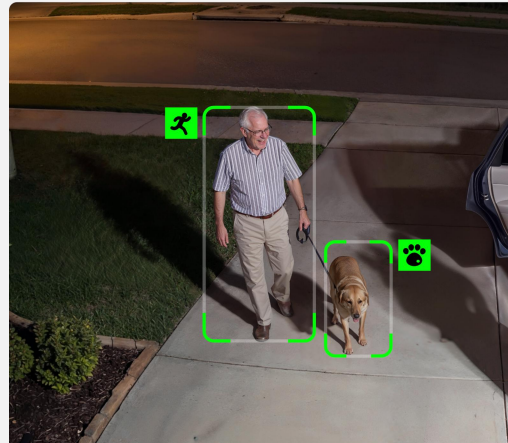
Powerful spotlights illuminate intruders while the built-in siren delivers a loud, immediate warning to stop threats in their tracks after dark.



Color Night Vision



Infrared Night Vision



Motion-Activated Spotlight



Siren & Light Deterrence

Local-First Storage With Optional Cloud Backup

Store footage securely with multiple recording options and no mandatory subscription. Reolink OMVI 3i cameras keep your recordings accessible, private, and under your control.

Full Control of Your Footage

Supports microSD (up to 512GB), Reolink NVR, Home Hub, FTP, and NAS storage, with RTSP/ONVIF compatibility for flexible system integration.

No Mandatory Subscription

Core features work without monthly fees, keeping long-term security costs predictable and affordable.

Optional Cloud Backup*

Cloud recording can serve as a backup to prevent footage loss in case of device damage or theft.

*Supported in select regions.



Find What Matters in Seconds With AI Video Search

Simply enter a search phrase and instantly locate relevant footage. Powered by ReoNeura technology, the system analyzes your query and scans recordings to surface matching clips within seconds. All processing happens locally on the device, protecting privacy while eliminating the need for tedious manual searching.



Reliable Wired Power for Nonstop 24/7 Security

OMVI 3i PoE

PoE delivers stable power, reliable connectivity, and simplified installation through a single cable. It's ideal for continuous monitoring environments that demand dependable, always-on security.

Power Over Ethernet (PoE)

A single Ethernet cable provides both power and data, simplifying installation and reducing wiring complexity.

Designed for Continuous Monitoring

PoE systems provide more stable performance for constant recording and high workloads compared to wireless solutions.

Flexible System Expansion

Compatible with PoE switches, injectors, and NVR systems, allowing easy expansion without additional power adapters.



Easy Plug-In Setup With Flexible Wi-Fi Installation

OMVI 3i WiFi

Plug-in power combined with Wi-Fi 6 connectivity enables fast installation without Ethernet cables, making it ideal for finished spaces where running new cables isn't practical.

Plug-In Power With Wi-Fi Connectivity

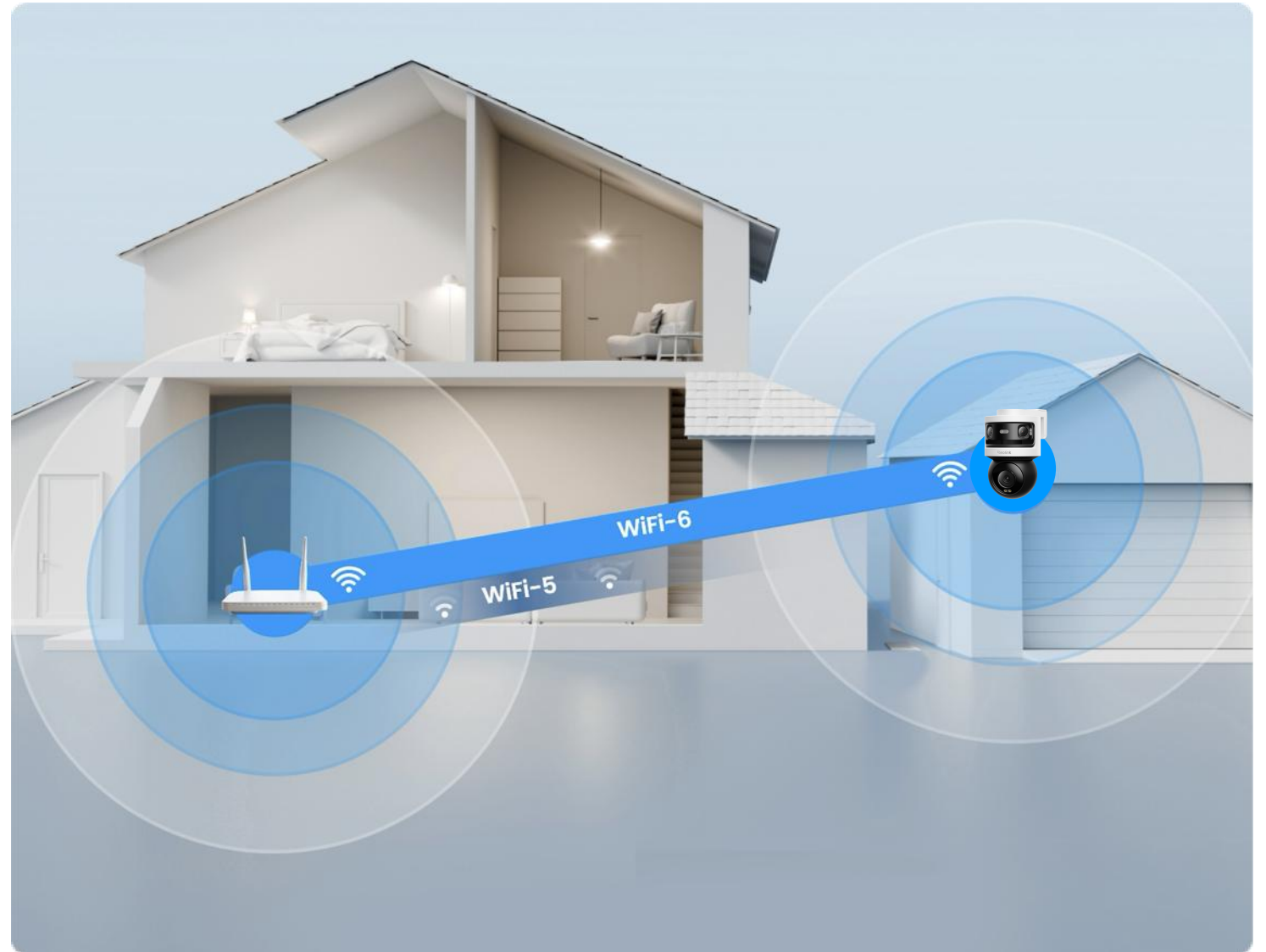
Simply plug the camera into a standard outlet, connect to Wi-Fi, and start monitoring—no Ethernet cable required.

Next-Generation Wi-Fi 6

Dual-band 2.4GHz and 5GHz Wi-Fi 6 ensures faster speeds, stronger signals, and improved security with WPA3 encryption.

Flexible Placement

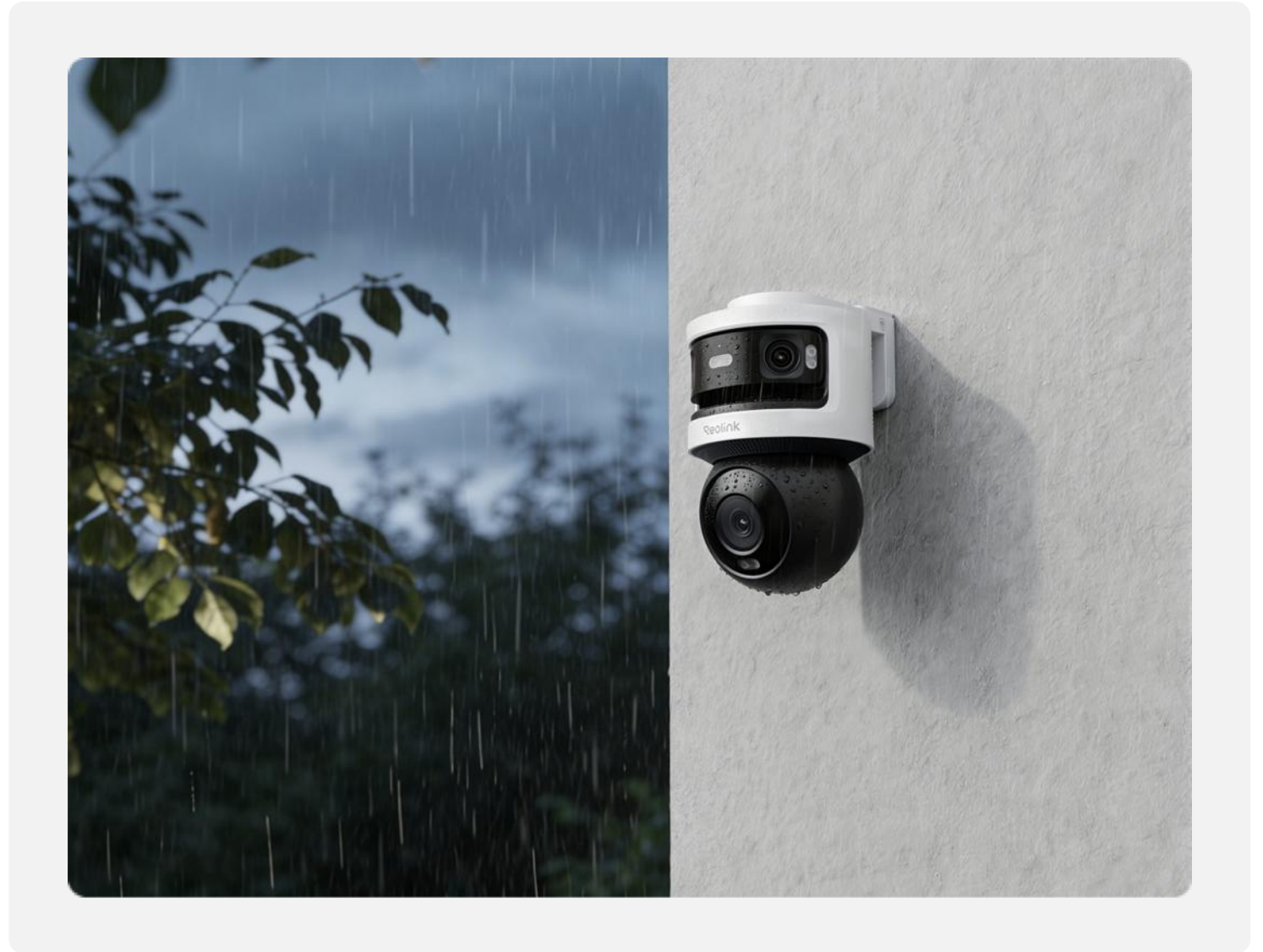
Install the camera wherever a power outlet is available, making deployment easy in homes or finished spaces.



Built for Everyday Outdoor Security

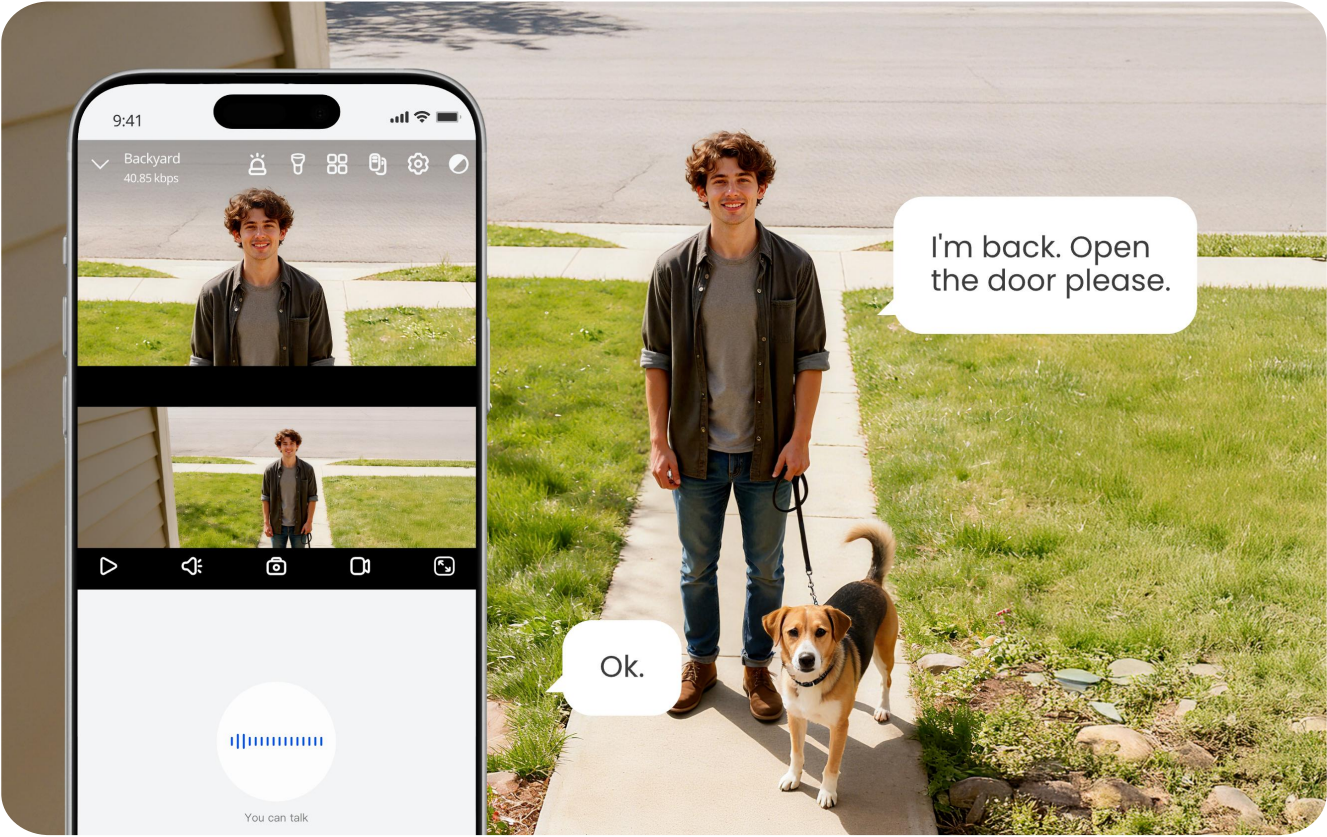
IP66 weather-resistant construction ensures reliable outdoor performance and long-term durability in everyday conditions.

Suitable In All Weather



Listen and Speak in Real Time

Use the Reolink App to listen and talk through the camera instantly, whether guiding a delivery driver, calming a pet, or warning off an intruder.

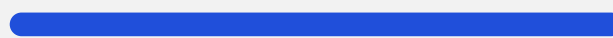


Stay Connected and in Control, Anytime

- Access live view and recordings across devices.
- H.264 / H.265 compression for efficient storage.
- Time-lapse recording for creative and practical uses.
- Seamlessly integrate with Google Assistant.



H.265



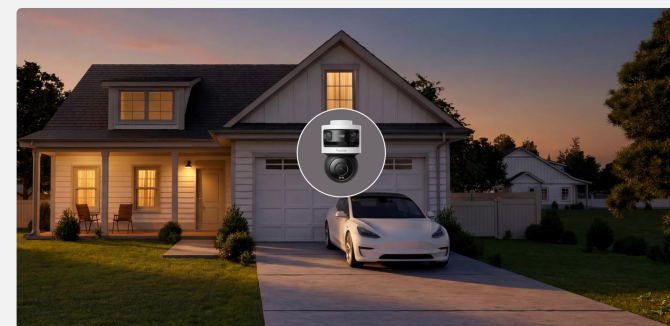
(Save ~50% Storage)

H.264



Flexible Installation for Any Location

Designed for maximum flexibility, Reolink OMVI 3i cameras support ceiling, wall, and corner mounting. Their powerful presence and wide coverage make them ideal for securing backyards, gardens, parking areas, and commercial properties.



Specifications Reolink OMVI 3i PoE

Video & Audio	
Image Sensor	1/2.7"+1/2.7"+1/2.8"CMOS Sensor
Resolution	Panoramic: 5120 x 1920 (10MP) @20FPS PT: 3840 x 2160 (8MP) @20FPS
Lens	Panoramic: f=2.8mm, F=1.6 PT: f=6mm, F=1.6
Video Compression	H.265/H.264
Zoom	Digital Zoom
Field of View	Panoramic: H:180°, V: 65° PT: H: 55°, V: 30°
Infrared Night Vision	Up to 30 Meters (Auto-switching with IR-cut filter)
Color Night Vision	With Spotlights: 8pcs/7W/6000K
Frame Rate	Main Stream: 2fps - 20fps (default: 20fps) Sub Stream: 4fps - 20fps (default: 20fps)
Code Rate (Panoramic)	Main Stream: 3072Kbps -8192Kbps (default: 6144Kbps) Sub Stream: 256Kbps -2048Kbps (default: 1536Kbps)
Code Rate (PT)	Main Stream: 3072Kbps -7168Kbps (default: 5120Kbps) Sub Stream: 256Kbps -1228Kbps (default: 1228Kbps)
Audio	Two-Way Audio (Built-in microphone and speaker)

Interface	
Power Port	DC Power Port

Ethernet Port	One 10M/100Mbps; RJ45
Storage	Up to 512 GB microSD Card / Reolink NVR/ Reolink Cloud (Selected Countries)
Reset Button	YES

Power	
POE	IEEE 802.3at, 48V Active
DC Power	DC 12.0V= 2A, <24W

Pan&Tilt	
Pan &Tilt Range	Pan: 350° , Tilt: 50°
Pan Speed	60/4°-60°/s (configurable)
Tilt Speed	30/8°-30°/s (configurable)
Preset	Supports 1 guard position & up to 64 preset positions
Auto Patrol	Supports 1 patrol; up to 4 presets per patrol
SyncTrack	YES

AI	
Local AI Video Search	YES
Perimeter Protection (Panoramic Only)	Line Crossing Alert, Zone Intrusion Alert, Zone Loitering Alert
Smart Alarm	Motion Detection/Human Detection/Vehicle Detection/Animal Detection

Other Features	
Recording Modes	Motion-Triggered Recording (default); Scheduled Recording, 24/7 Recording
Time Lapse	YES
Smart Home Compatibility	Google Assistant

Working Environment	
Operating Temperature	-10°C~+55°C (14°F~131°F)
Operating Humidity	10% ~ 90%
Waterproof	IP66

Mechanical	
Dimensions	202*151*125mm
Weight	1.3kg

Software	
Protocols & Standards	HTTPS, SSL, TCP/IP, UDP, HTTP, IPv4, UPnP, RTSP, RTMP, SMTP, NTP, DHCP, DNS, DDNS, FTP, P2P

Warranty	
Limited Warranty	2-year limited warranty. For support, visit https://support.reolink.com/hc/en-us/ .

Specifications Reolink OMVI 3i WiFi

Video & Audio	
Image Sensor	1/2.7"+1/2.7"+1/2.8"CMOS Sensor
Resolution	Panoramic: 5120 x 1920 (10MP) @20FPS PT: 3840 x 2160 (8MP) @20FPS
Lens	Panoramic: f=2.8mm, F=1.6 PT: f=6mm, F=1.6
Video Compression	H.265/H.264
Zoom	Digital Zoom
Field of View	Panoramic: H:180°, V: 65° PT: H: 55°, V: 30°
Infrared Night Vision	Up to 30 Meters (Auto-switching with IR-cut filter)
Color Night Vision	With Spotlights: 8pcs/7W/6000K
Frame Rate	Main Stream: 2fps - 20fps(default: 20fps) Sub Stream: 4fps - 20fps(default: 20fps)
Code Rate (Panoramic)	Main Stream: 3072Kbps -6144Kbps (default: 4096Kbps) Sub Stream: 256Kbps -2048Kbps (default: 1536Kbps)
Code Rate (PT)	Main Stream: 3072Kbps -6144Kbps (default: 4096Kbps) Sub Stream: 256Kbps -1228Kbps (default: 1228Kbps)
Audio	Two-Way Audio (Built-in microphone and speaker)

Interface	
Power Port	DC Power Port
Reset Button	YES
SD Card Slot	Supports Max. 512GB microSD Card

Power	
DC Power	DC 12.0V= 2A, <24W

Wi-Fi	
Wireless Standard	IEEE 802.11 ac/ax/a/b/g/n
Operating Frequency	2.4GHz/5GHz
Wireless Security	WPA/WPA2/WPA3

Bluetooth	
Bluetooth	YES

Pan&Tilt	
Pan &Tilt Range	Pan: 350° , Tilt: 50°
Pan Speed	60/4°-60°/s (configurable)
Tilt Speed	30/8°-30°/s (configurable)
Preset	Supports 1 guard position & up to 64 preset positions
Auto Patrol	Supports 1 patrol; up to 4 presets per patrol
SyncTrack	YES

Software	
Protocols & Standards	HTTPS, SSL, TCP/IP, UDP, HTTP, IPv4, UPnP, RTSP, RTMP, SMTP, NTP, DHCP, DNS, DDNS, FTP, P2P

AI	
Local AI Video Search	YES
Perimeter Protection (Panoramic Only)	Line Crossing Alert, Zone Intrusion Alert, Zone Loitering Alert
Smart Alarm	Motion Detection/Human Detection/ Vehicle Detection/Animal Detection

Other Features	
Recording Modes	Motion-Triggered Recording (default); Scheduled Recording, 24/7 Recording
Time Lapse	YES
Smart Home Compatibility	Google Assistant

Working Environment	
Operating Temperature	-10°C~-55°C (14°F~131°F)
Operating Humidity	10% ~ 90%
Waterproof	IP66

Mechanical	
Dimensions	202*151*125mm
Weight	1.1kg

Warranty	
Limited Warranty	2-year limited warranty. For support, visit https://support.reolink.com/hc/en-us/ .

Reolink OMVI 3i PoE & 3i WiFi



Reolink

Thank You

