

Reolink

# Reolink OMVI X16 PoE

See It All. 16x Zoom. Track with Intelligence.



# Reolink OMVI X16 PoE

Experience the high-end panoramic AI surveillance camera with unmatched clarity, all-around coverage, and intelligent AI detection. Enjoy smarter monitoring and reliable protection for outdoor spaces.

Combining a 16MP Dual-Lens Panoramic Camera with a 4K 8MP PTZ Camera, Reolink OMVI X16 PoE delivers both panoramic awareness and flexible detail capture. With 360° endless pan, 16× Optical Zoom, Panoramic-to-PTZ synchronized tracking, and smart AI features, Reolink OMVI X16 PoE keeps wide areas and moving subjects clearly in view.

Designed for flexible deployment, Reolink OMVI X16 PoE supports ceiling, wall, and corner mounting. Ideal for large yards, gardens, parking lots, long driveways, streets, warehouses, and commercial spaces. It provides wide coverage and intelligent monitoring, making it the ultimate choice for outdoor surveillance.



# Total Coverage. Absolute Clarity.

The upper panoramic camera and the lower PTZ camera work seamlessly together, delivering constant awareness of both wide scenes and close-up details. Even while the PTZ camera moves, the panoramic view remains fully visible, eliminating blind spots and keeping the entire scene in clear view.

Panoramic Camera for Large Areas

---

**16MP Dual-Lens**

**180° Ultra-Wide View**

**22° Tilt**



PTZ Camera for Distant Details

---

**4K 8MP Clarity**

**360° Endless Pan**

**95° Tilt**

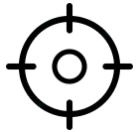
**16× Optical Zoom**

# Panoramic-to-PTZ SyncTrack, Always Centered

The panoramic camera detects people, vehicles, and animals across the 180° view. Once detected, the PTZ camera automatically locks on and follows the subject, even if it moves beyond the panoramic frame. Auto Framing\* works together with SyncTrack to keep the target perfectly centered in the frame. When enabled, the PTZ camera can zoom\* in on targets in real time during SyncTrack, delivering richer detail while never losing sight of the subject.



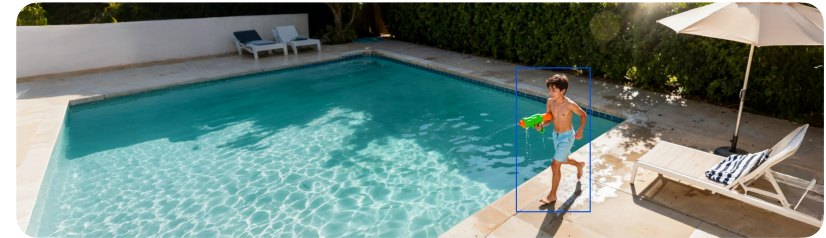
Panoramic-to-PTZ Sync



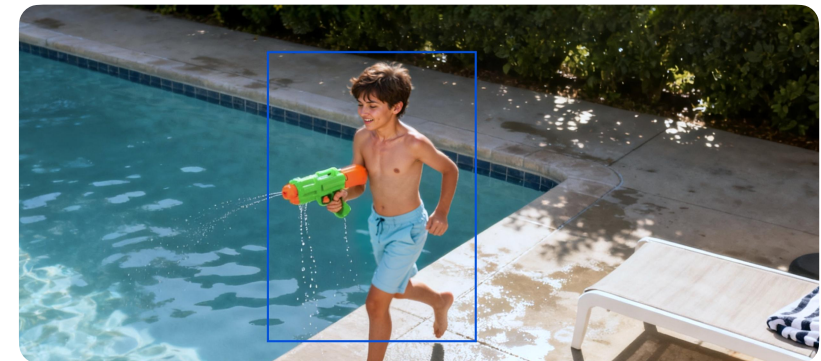
Lock-On and Tracking



Panoramic Cam Detects



PTZ Cam Tracks & Auto Frames

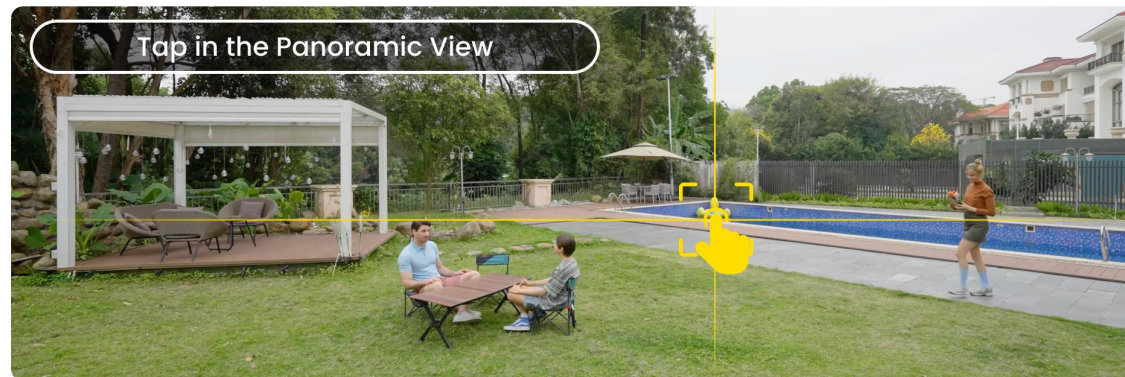
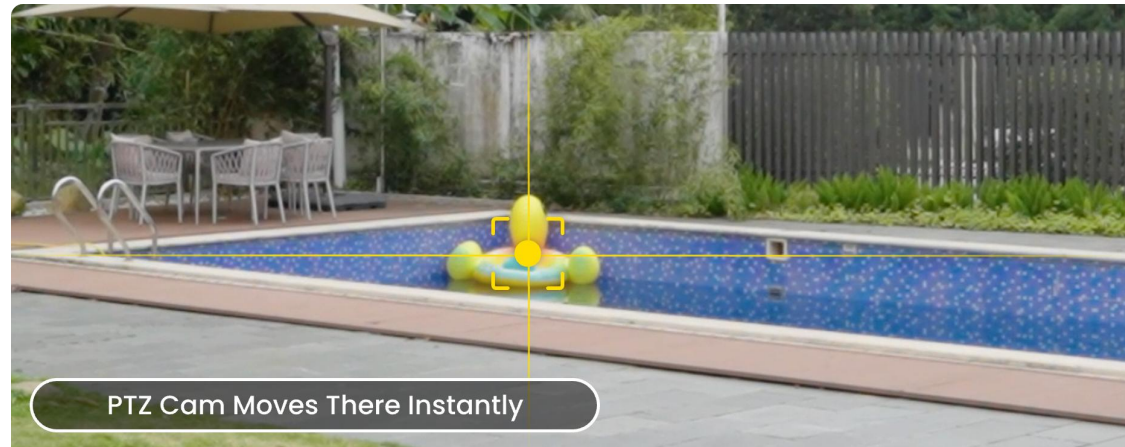


\* To use the Auto Framing feature, you will need to update camera firmware and mobile app to the latest versions.

\* Digital Zoom, instead of Optical Zoom, is implemented when the Auto Framing SyncTrack feature works.

# Pinpoint with One Tap

Tap anywhere in the panoramic view and the PTZ camera automatically pans and focuses on that location, making it easy to check lanes, courtyards, or corners.



# Smarter AI, Faster Search, Stronger Protection

Powered by advanced local AI, Reolink OMVI X16 PoE provides more reliable monitoring, faster alerts, and flexible protection tailored to real-world security needs.

## Local AI-Powered Video Search

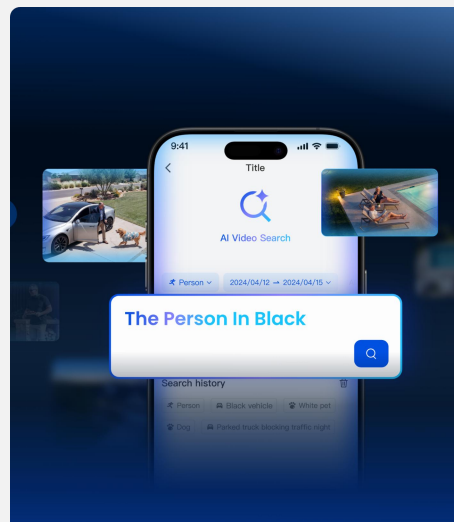
No more scrubbing, guessing, or reliving hours of video. Just type in key details – a person, a vehicle, even clothing color – and get the moment you're looking for in seconds.

## Accurate AI-Powered Detection

Advanced local AI accurately identifies people, vehicles, and animals, reducing false alerts caused by environmental motion such as wind, shadows, or lighting changes.

## Customizable Perimeter Protection\*

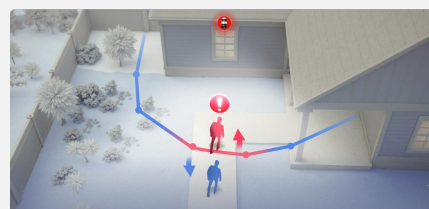
Create virtual fences, configure intrusion detection, set loitering alerts, and define detection zones for more precise monitoring.



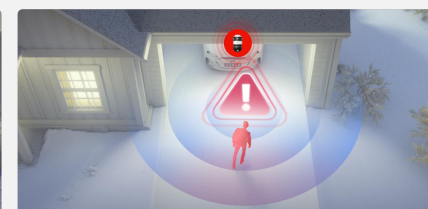
Local AI Video Search



Smart Person/Vehicle/Animal Detection



Line Crossing Alert



Zone Intrusion Alert



Zone Loitering Alert

\* Supported on the upper panoramic camera.

# See Clearly at Night, In Color or Infrared

## Color and Infrared Night Vision Options

Built-in white light provides color night vision for clearer details in low-light conditions, while infrared mode enables discreet black-and-white monitoring up to 246 ft (75m) away.

## Smart Lighting for Security

The white spotlight can be scheduled, manually activated, or triggered automatically when people, vehicles, or animals are detected.

## Designed for Nighttime Protection

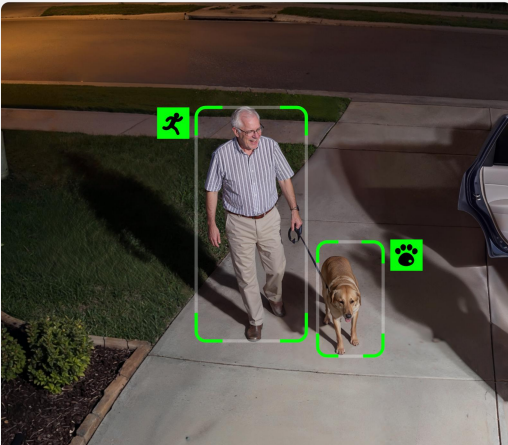
Powerful spotlights illuminate intruders while the built-in siren delivers a loud, immediate warning to stop threats in their tracks after dark.



Color Night Vision



Infrared Night Vision



Motion-Activated Spotlight



Siren & Light Deterrence

# Smart Patrol for Seamless 360° Coverage

Designed to reduce repetitive camera adjustments while maintaining full coverage, Reolink OMVI X16 PoE delivers less manual work and a better long-term experience.

## Customizable preset patrol modes\*

Create up to 64 preset positions for instant quick access. Configure a patrol route with up to 16 presets to automatically monitor key areas. Dwell time, patrol speed, and scheduled patrol periods are fully customizable for the route.

## One-Click 360° AutoSweep

With a single tap, the camera automatically sweeps the surrounding area for complete coverage.

\* SyncTrack works at preset stops only, not during patrol.



# Flexible Storage for 24/7 Worry-Free Recording

Store footage securely with multiple recording options and no mandatory subscription. Reolink OMVI X16 PoE keeps your recordings accessible, private, and under your control.

## Full Control of Your Footage

Supports microSD (up to 512GB), Reolink NVR, FTP, and NAS storage, with RTSP/ONVIF compatibility for flexible system integration.

## No Mandatory Subscription

Core features work without monthly fees, keeping long-term security costs predictable and affordable.

## Optional Cloud Backup\*

Cloud recording can serve as a backup to prevent footage loss in case of device damage or theft.

\*Supported in select regions.



# PoE Power. Stable, Reliable.

Reolink OMVI X16 PoE delivers stable power, reliable connectivity, and simplified installation through a single cable. It's ideal for continuous monitoring environments that demand dependable, always-on security.

## Power Over Ethernet (PoE)

A single Ethernet cable provides both power and data, simplifying installation and reducing wiring complexity.

## Designed for Continuous Monitoring

Compared to wireless or solar solutions, PoE provides more consistent performance under continuous recording and high workloads.

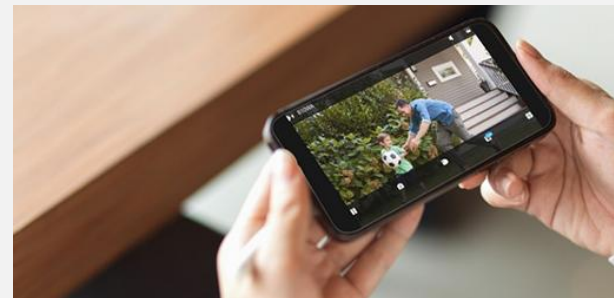
## Support for Flexible System Expansion.

Compatible with PoE switches, injectors, and NVR systems, allowing easy expansion without additional power adapters.



# Stay Connected and in Control, Anytime

- Access live view and recordings across devices.
- Receive real-time alerts when events occur.
- H.264 / H.265 compression for efficient storage.
- Seamlessly integrate with Google Assistant.



H.265



(Save ~50% Storage)

H.264



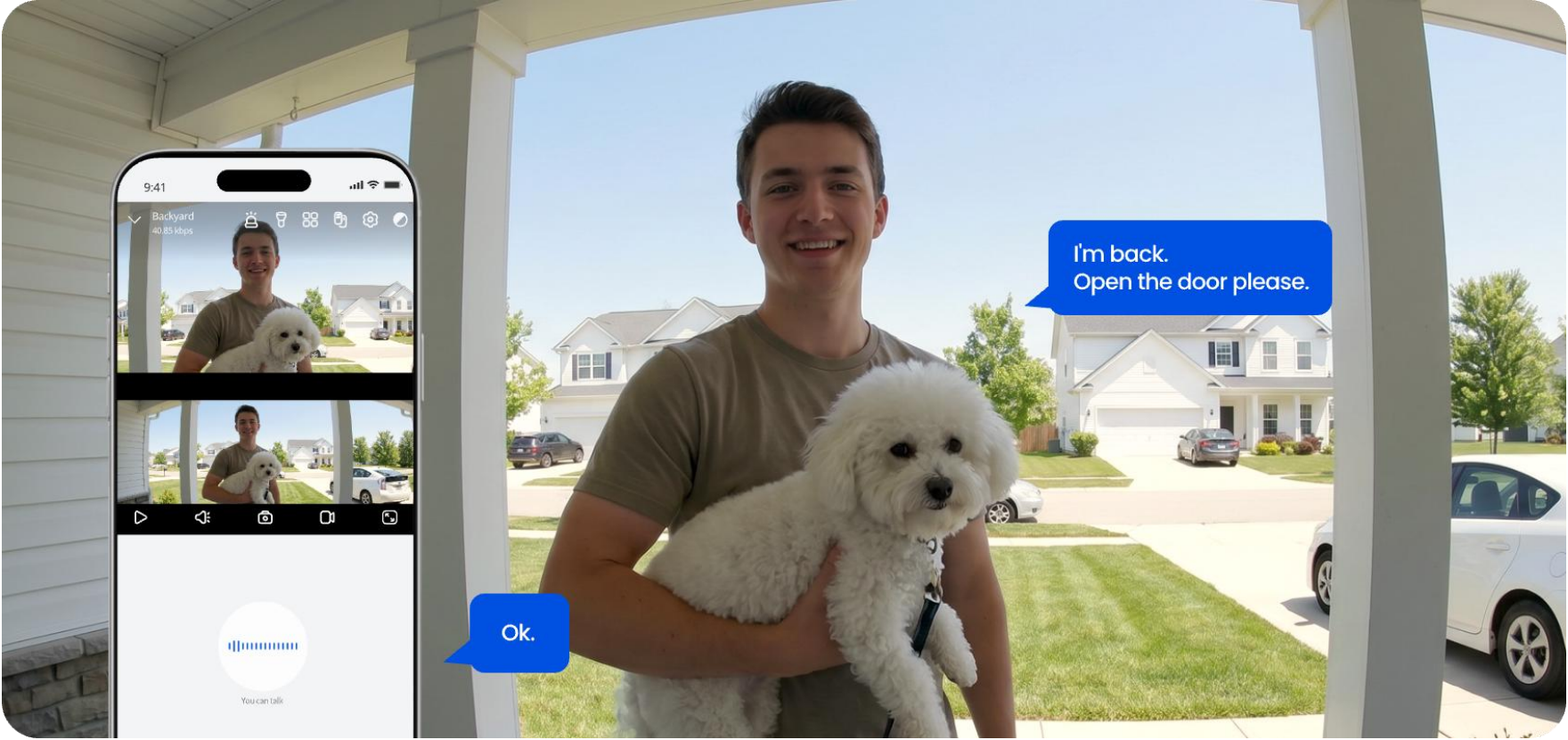
# Time Lapse, Made Easy

With Time Lapse, Reolink OMVI X16 PoE captures a long-duration event in a short video. Ideal for project monitoring and long-term observation – review everything that happened in just minutes, while saving time and storage space.



# Listen and Speak in Real Time

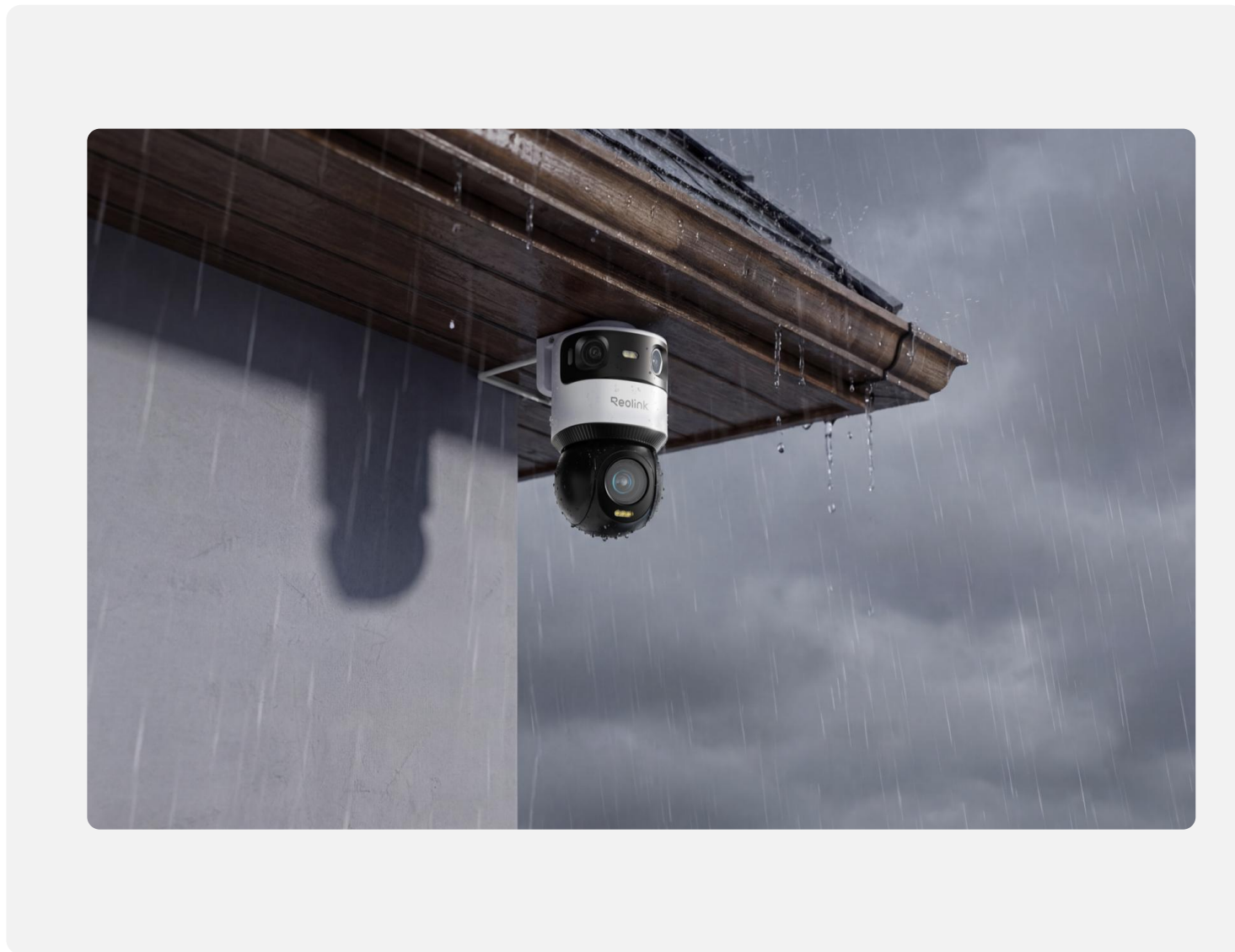
Use the Reolink App to listen and talk through the camera instantly, whether guiding a delivery driver, calming a pet, or warning off an intruder.



# Built for Everyday Outdoor Security

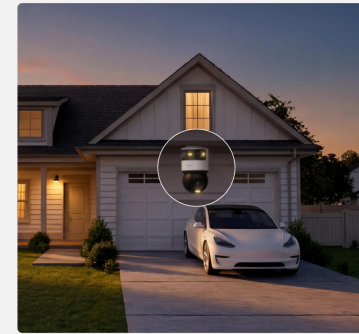
IP66 weather-resistant construction ensures reliable outdoor performance and long-term durability in everyday conditions.

## Suitable In All Weather



# Flexible Installation for Any Location

Designed for maximum flexibility, Reolink OMVI X16 PoE supports ceiling, wall, and corner mounting. With its wide coverage and intelligent monitoring, it is ideal for large yards, parking lots, commercial properties, and other expansive outdoor spaces.



# Specifications OMVI X16 PoE

## Video & Audio

Image Sensor	1/2.8"CMOS Sensor
Resolution	Panoramic: 7680 x 2160 (16 megapixels) @20FPS PTZ: 3840 x 2160 (8 megapixels) @20FPS
Lens	Panoramic: f=2.8mm, F=1.6 PTZ: f=5.3-86mm/Max F1.6
Video Compression	H.265/H.264
Zoom	Panoramic: Digital Zoom PTZ: 16X Optical Zoom
Field of View	Panoramic: H:180°, V: 55° PTZ: H: 54.2°-3.6°,V: 41.7°-2.1°
Infrared Night Vision	Up to 75 Meters (Auto-switching with IR-cut filter)
Color Night Vision	With Spotlights: 9pcs/6W/6500K
Frame Rate	Main Stream: 2fps - 20fps (default: 20fps) Sub Stream: 4fps - 20fps (default: 20fps)
Code Rate (Panoramic)	Main Stream: 3072Kbps -12288Kbps (default: 10240Kbps) Sub Stream: 256-2048Kbps (default: 1024kbps)
Code Rate (PTZ)	Main Stream: 3072-7168Kbps (default: 5120kbps) Sub Stream: 256-2048Kbps (default: 1024kbps)
Audio	Two-Way Audio (Built-in microphone and speaker)

## Interface

Power Port	DC Power Port
Ethernet Port	One 10M/100Mbps; RJ45
Storage	Up to 512 GB microSD Card / Reolink NVR/ Reolink Cloud (Selected Countries)

Reset Button	YES
SD Card Slot	Supports Max. 512GB microSD Card

## Pan&Tilt

Pan &Tilt Range	Panoramic: Tilt: 0°~22° PTZ: 0° to 360° endless, Tilt: -5°~90°
Pan Speed	1.4°-180°/s (configurable)
Tilt Speed	1.4°-56°/s (configurable)
Preset	Supports 1 guard position & up to 64 preset positions
Auto Patrol	Supports 1 patrol; up to 16 presets per patrol
SyncTrack	YES

## AI

Local AI Video Search	YES
Auto Framing*	YES
Perimeter Protection (Panoramic Only)	Line Crossing Alert, Zone Intrusion Alert, Zone Loitering Alert
Smart Alarm	Motion Detection/Human Detection/Vehicle Detection/Animal Detection

## Other Features

Recording Modes	Motion-Triggered Recording (default); Scheduled Recording, 24/7 Recording
Time Lapse	YES
Smart Home Compatibility	Google Assistant

## Warranty

Limited Warranty	2-year limited warranty. For support, visit <a href="https://support.reolink.com/hc/en-us/">https://support.reolink.com/hc/en-us/</a> .
------------------	---

## Working Environment

Operating Temperature	-10°C~+55°C (14°F~131°F)
Operating Humidity	10% ~ 90%
Waterproof	IP66

## Mechanical

Dimensions	257*167*136MM
Weight	2.85KG

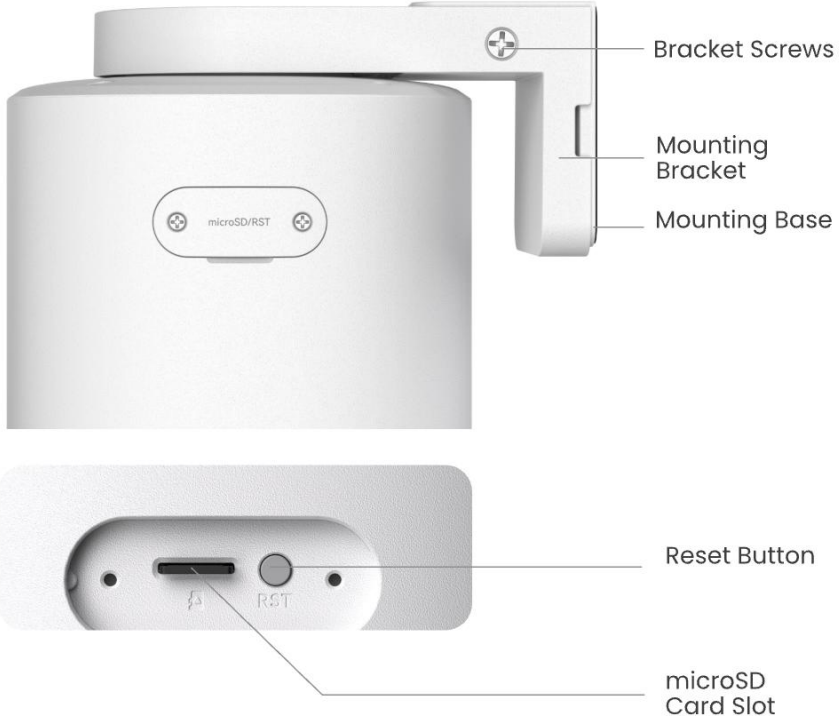
## Software

Browsers Supported	Edge, Chrome, Firefox, Safari
OS Supported	PC: Windows, Mac OS; Smartphone: iOS, Android
Protocols & Standards	HTTPS, SSL, TCP/IP, UDP, HTTP, IPv4, UPnP, RTSP, RTMP, SMTP, NTP, DHCP, DNS, DDNS, FTP, P2P
User Access	Max. 20 Users (1 admin & 19 user); Max.12 simultaneous streams (2 main & 10 sub streams)

## Power

POE	IEEE 802.3bt, 48V Active
DC Power	DC 12.0V= 3A, <36W

# Reolink OMVI X16 PoE



Reolink

Thank You

