

Reolink

Professional Series

Smart Surveillance Solutions for Small and Medium Businesses



Retail | Offices | Houses | More
Cameras | Video Recorders | Software | Service

Series Highlights

4K+

High Resolution



Color
Night Vision



Wide-Field
View



HDR



Person & Object
Detection



Smart Event
Detection (Beta)



Perimeter
Protection



AI Video
Search



Active Deterrence



Two-Way
Audio



IP67
Weatherproof



Metal
Housing



H.265 / H.264 Video
Compression



Operating
Temperature:
-30°C to 55°C



512GB microSD
Card



24/7
Recording

All-in-One Centralization

Easily oversee your entire business from a single interface and enjoy continuous, all-around protection hassle-free.



Solution Features



High Reliability



Easy to install and use



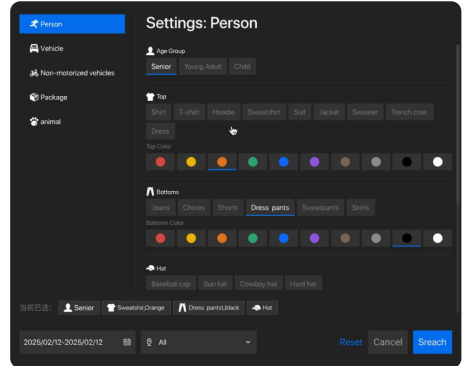
24/7 Stable Operation

Local AI Video Search

Open semantic retrieval—search AI-alerted videos with simple descriptions like “person in white”. No more wasting hours manually reviewing footage.



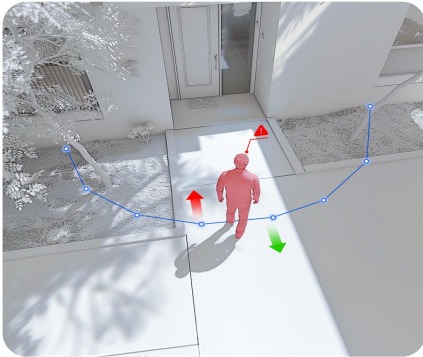
Structured Advanced Search* on NVR to quickly select the target features



Perimeter Protection

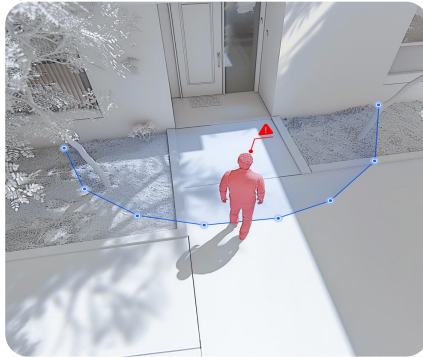
Line Crossing Alert

Alerts on Crossing Line



Zone Intrusion Alert

Alerts on Zone Intrusion



Zone Loitering Alert

Get Alerted by Loitering Threats



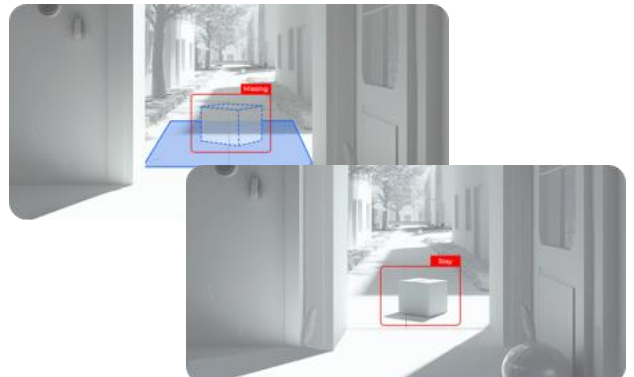
Person & Object Detection*

Receive alerts only for real concerns involving Person, Motor Vehicle, Animal, Non-motorized Vehicle, and Package Detection, reducing false alarms.



Smart Event Detection (Beta)

Detects abnormal events like Object Removal and Forgotten Object, enhancing situational awareness and security response.



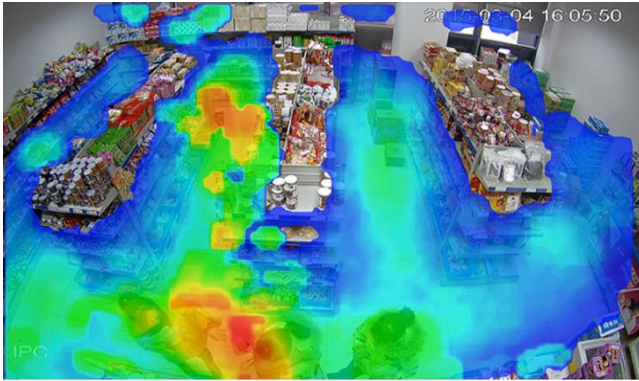
*Structured Advanced Search is supported on Reolink Professional Series NVRs.

*Non-motorized Vehicle and Package Detection are supported on specified models.

Crowd Flow Analysis

Heat Map

Gain clear insights into visitor behavior with color-coded heat maps. These reveal popular areas and low-traffic zones, helping optimize layouts and product placement.



People Counting*

Count the number of people crossing a line (entering, leaving, passing) within a specified time period in a custom area.



Zone Crowd Monitoring*

Count people in multiple predefined zones (density analysis): Detects crowd congestion levels in specified areas, triggering alerts based on person count or crowding severity.

Area Crowd Detection

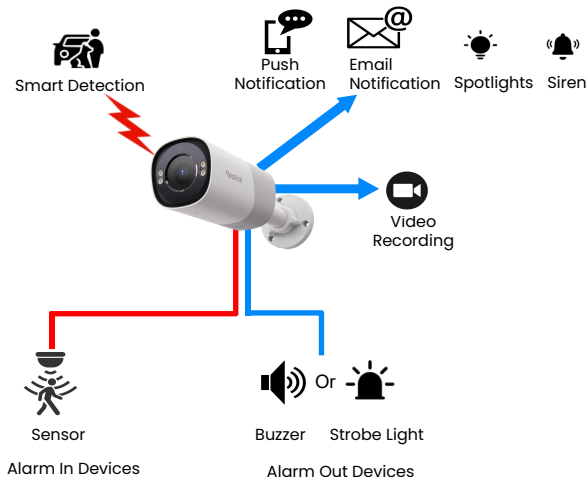


Queue Management



* People Counting and Zone Crowd Monitoring may be in development and may vary from displayed images.

Flexible Alarm Integration



Input/Output Devices & Camera Linkage

- One Alarm input and One Alarm output
- Alarm in device triggers camera actions such as video recording, email notifications, push notifications, spotlights and siren activation.
- Camera smart detection triggers alarm out devices, like siren or strobe light.
- Alarm in device triggers alarm out device.

180° Ultra Wide Coverage

Two Lenses, One View



► Why Need A Dual-Lens Panoramic Camera

180° Ultra Wide Angle, Minimize Blind Spots

Utilizing an advanced dual-image stitching algorithm, it combines images captured by the dual lenses to present a panoramic view free of distracting seams or disconnections. Now, bid farewell to blind spots.



Dual-Image Stitching Technology for Zero Distortion

Seamlessly stitching images from two lenses, overcoming the distortion challenges by algorithm simulating human eyes visual effects.



Up to 16MP Resolution to See What Matters Clearly

Equipped with dual 4K sensors, the Reolink Professional series delivers groundbreaking 16MP Ultra HD clarity. Enhanced with smart detection, it ensures no suspicious activity goes unnoticed.





ColorX Night Vision

ColorX technology is a game-changer in low-light situations. With the F1.0 Super Aperture, an advanced 1/1.8" sensor and the HDR technology, it turns darkness into clear, colorful visuals, making nighttime surveillance as clear as daytime.

F1.0 Super Aperture



F1.0 aperture captures 4X more light than F2.0, providing unprecedented brightness and clarity.

Advanced 1/1.8" Sensor



1/1.8" sensor has a larger target surface for light capture and higher sensitivity to colors.

Powerful ISP Module



The advanced image-processing algorithm helps restore more details and natural colors.

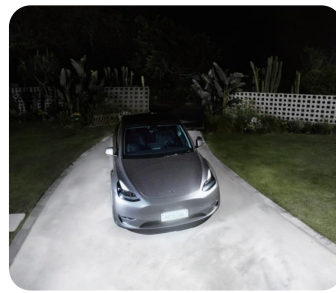
Breakthrough Technology: Day and Night Confocal F1.0 Lens

The F1.0 lens with day-night confocality enhances light intake while integrating an infrared night vision function, enabling the camera to deliver both full-color without spotlights and infrared imaging. This effectively resolves the issue of poor clarity in full-color cameras under extremely low-light conditions.

The camera with Day and Night Confocal F1.0 Lens provides ColorX night vision, black and white night vision, color night vision (spotlight mode) and smart mode - when people/vehicles/animals are detected at night, the light will be triggered to deter them. Customers can set it according to their needs.



Naked Eye Perspective



Spotlight Night Vision



ColorX Night Vision



Black & White Night Vision

Product Showcase



RP-PCB8M / RP-PCT8M

- 4K Resolution @25fps
- Person & Object Detection
- Smart Event Detection (Beta)
- Perimeter Protection
- 125° Ultra-Wide Diagonal Field of View
- Spotlight Color and IR Night Vision
- H.265 / H.264
- Two-Way Audio
- IP67 Weatherproof
- Metal Housing
- People Counting
- Zone Crowd Monitoring
- ONVIF



RP-PCB12M / RP-PCT12M

- 12MP Resolution @25fps
- AI Video Search
- Person & Object Detection
- Smart Event Detection (Beta)
- Perimeter Protection
- 123° Diagonal Field of View
- Spotlight Color and IR Night Vision
- H.265 / H.264
- AI-ISP
- Two-Way Audio
- IP67 Weatherproof
- Metal Housing
- People Counting
- Zone Crowd Monitoring
- ONVIF



RP-PCB8MZ / RP-WCB8MZ

- 4K Resolution @30fps (RP-PCB8MZ)
- 4K Resolution @25fps (RP-WCB8MZ)
- Dual Band Wi-Fi 6 (RP-WCB8MZ)
- 5X Optical Zoom
- AI Video Search
- Person & Object Detection
- Smart Event Detection (Beta)
- Perimeter Protection
- Spotlight Color and IR Night Vision
- AI-ISP
- HDR
- H.265 / H.264
- Two-Way Audio
- IP67 Weatherproof
- Metal Housing
- People Counting
- Zone Crowd Monitoring
- Alarm Input/ Output Interface
- ONVIF



RP-PCT8MD / RP-PCT16MD

- 8MP Resolution (RP-PCT8MD)
- 16MP Resolution (RP-PCT16MD)
- 180° Panorama
- AI Video Search
- Person & Object Detection
- Smart Event Detection (Beta)
- Perimeter Protection
- Spotlight Color and IR Night Vision
- H.265 / H.264
- Motion Track (RP-PCT16MD)
- Two-Way Audio
- IP67 Weatherproof
- Metal Housing
- People Counting
- Zone Crowd Monitoring
- ONVIF



RP-PCB8MX

- 4K Resolution @30fps
- ColorX Night Vision
- AI Video Search
- Person & Object Detection
- Smart Event Detection (Beta)
- Perimeter Protection
- AI-ISP
- HDR
- H.265 / H.264
- Two-Way Audio
- IP67 Weatherproof
- Metal Housing
- People Counting
- Zone Crowd Monitoring
- Alarm Input/ Output Interface
- ONVIF



RP-PN8 / RP-PN16

- 8 Ports POE (RP-PN8)
- 16 Ports POE (RP-PN16)
- Up to 16MP Resolution
- 240Mbps Input / Output Bandwidth (RP-PN8)
- 400Mbps Input / Output Bandwidth (RP-PN16)
- Support Maximum 32TB
- Remote Access
- Local Access
- 24/7 Recording
- H.265 / H.264
- File Encryption
- Heat Map
- Centralized Management

Product Showcase



RP-PCV8MZ


- 4K Resolution @30fps
- 5X Optical Zoom
- AI Video Search
- Person & Object Detection
- Smart Event Detection (Beta)
- Perimeter Protection
- Spotlight Color and IR Night Vision
- AI-ISP
- HDR
- H.265 / H.264
- Two-Way Audio
- IP67 Weatherproof
- Metal Housing
- People Counting
- Zone Crowd Monitoring
- Alarm Input/ Output Interface
- IK10 Vandal-Proof
- ONVIF



RP-PCPT8M25Z

- 8MP Resolution @30fps
- 25X Optical Zoom
- 360°Pan, 0–90°tilt
- AI Video Search
- Person & Object Detection
- Perimeter Protection
- Smart Event Detection (Beta)
- Spotlight Color and IR Night Vision
- 100m (330ft) IR Night Vision
- Up to 100 meters (300ft) IR Night Vision
- H.265 / H.264
- Two-Way Audio
- IP67 Weatherproof
- Metal Housing
- ONVIF

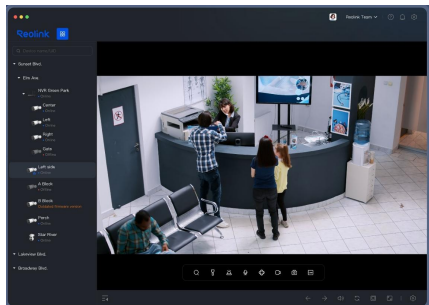
Accessory

	Model Name	Compatible Devices
	RLA-PS1 (PoE Switch)	All RP-Series PoE Cameras
	PoE Injector	All RP-Series PoE Cameras
	RLA-BKC1 Corner Mount Bracket	RP-PCB8M, RP-PCB12M RP-PCB8MZ, RP-PCB8MX RP-WCB8MZ
	RLA-BKC2 Corner Mount Bracket	RP-PCPT8M25Z
	Junction Box B10 (RLA-JBS1)	RP-PCB8M, RP-PCB12M RP-PCB8MZ, RP-PCB8MX RP-WCB8MZ
	Junction Box D20	RP-PCT8M RP-PCT12M RP-PCV8MZ
	Junction Box RLA-JBL1	RP-PCT8M RP-PCT12M RP-PCV8MZ RP-PCPT8M25Z

*The data above is obtained under specific test conditions. Actual use may vary. Specifications subject to change without notice.

Reolink VMS is a platform designed to simplify video surveillance for small to mid-sized operations—whether it's an office, warehouse, supermarket, hotel, or school. Access live footage, manage devices and user roles, and respond to motion alarms—all in one place to boost your security efficiency.

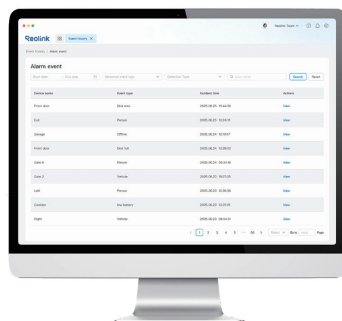
Easy Live View & Playback



View live feed of several cameras simultaneously and stay aware of your stores or offices, anytime from anywhere. The VMS Client supports up to 36-channel display. Easily playback the continuous footage or alarm recordings remotely.

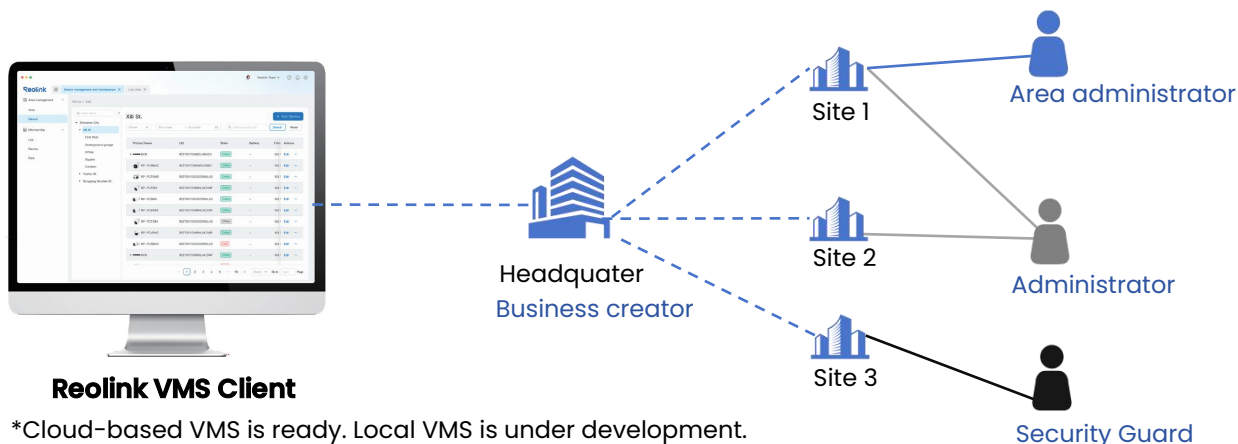
Quick Event Handling

Supports diverse detection, including Person & Object Detection, Smart Event Detection (Beta), Perimeter Protection, Device Anomaly Alarm, with instant pop-up notifications via VMS for prompt response.



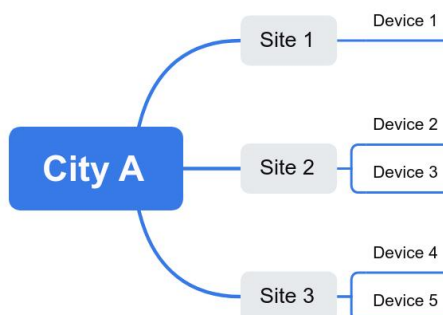
Efficient Member Permissions Management

Easily create a company account, add team members, and assign roles and permissions—all from one central platform. Once logged in, they can access devices associated with their account without repeated setup.



Multi-Device Management

Group devices by project, area, or custom categories. Create multi-level project and monitoring structures for clearer organization and faster device retrieval.



Be Prepared, Be Ahead


Contact Us


Business Contact: sales@reolink.com

Media Contact: pr@reolink.com

Official Website: reolink.com

Stay Connected

 [@ReolinkTech](https://www.facebook.com/ReolinkTech)

 [@Reolinkcams](https://www.instagram.com/Reolinkcams)

 [@ReolinkCameras](https://www.youtube.com/ReolinkCameras)



Visit reolink.com for
more information